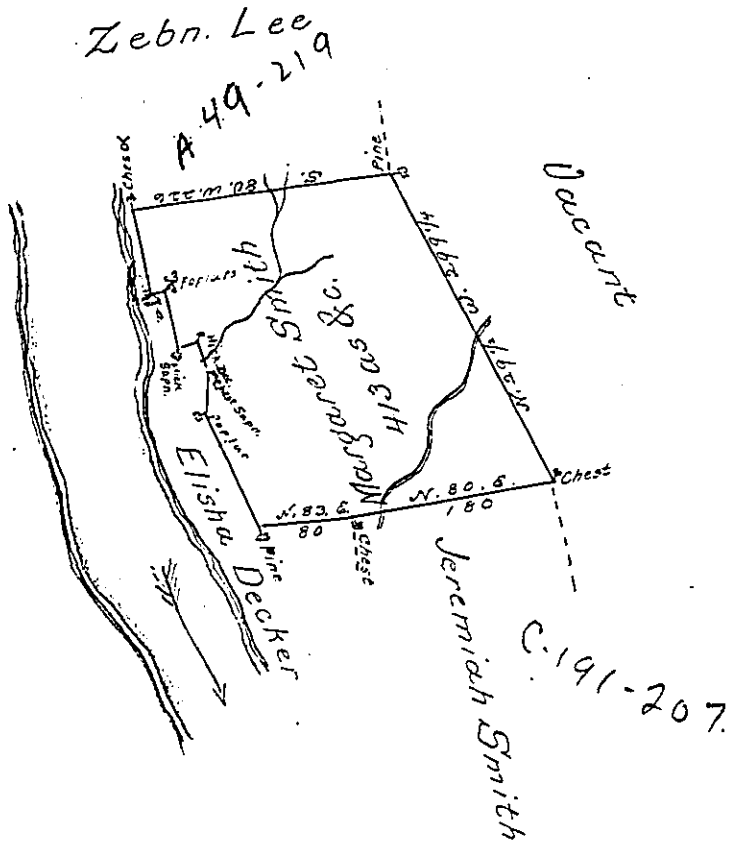


Cours & Dist. from the Chest α to the Pine

- ✓ S. $13\frac{1}{2}$. E. 72 to R. α
- ✓ S. 77. W. $6\frac{1}{2}$ to 3 poplars
- ✓ S. 22. E. 51 to an Hicky Sapn.
- ✓ N. 68. E. $13\frac{1}{2}$ Hicky
- ✓ ~~S. 1. E. 22. E. 21~~ to Ches Sapn.
- ✓ S. 1. E. $37\frac{1}{2}$ to poplar
- ✓ S. 27. E. 108 to the pine



Draft of a tract of land called _____ Situate on the East Side of the N. E. Branch of Susquea. River in the County of Luzerne containing four Hundred and thirteen acres and allowe. Surveyed the 29th. day of June 1793 for Margaret Smith in Pursuance of a warrant dated the 15th. day of Jany. 1793

by Wm. Gray D. S.

Daniel Brodhead Esqr. }
Surv. Genl. }

IN TESTIMONY that the above is a copy of the original remaining on file in the Department of Internal Affairs of Pennsylvania, made conformably to an Act of Assembly approved the 16th day of February, 1833, I have hereunto set my Hand and caused the Seal of said Department to be affixed at Harrisburg, this seventh day of August 1900

James W. Fatta
Secretary of Internal Affairs.